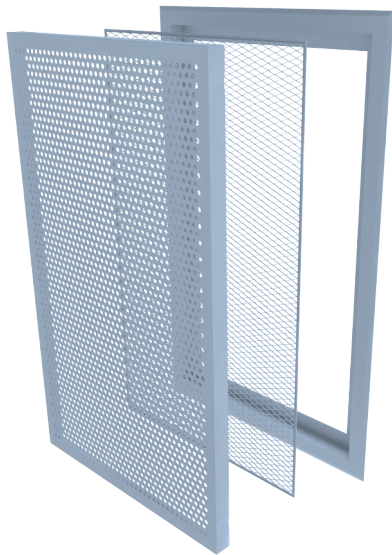
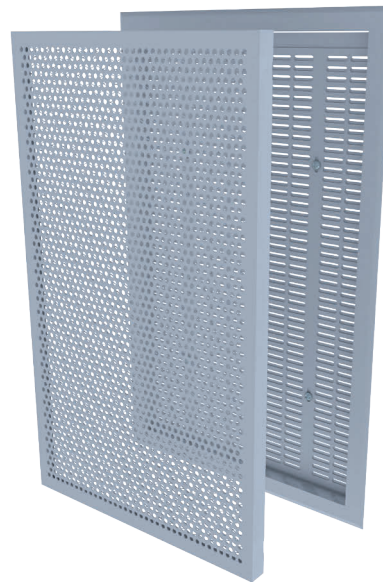


Ventilation Exhaust grilles VMOS / VMOSR



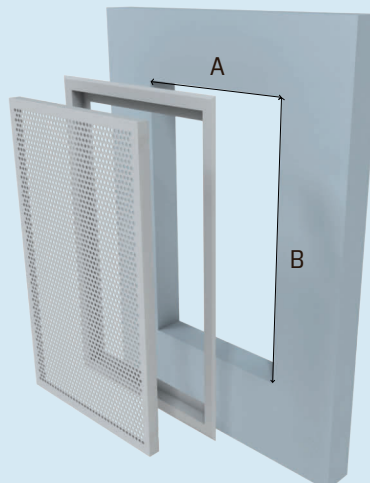
Wall grille VMOS



Wall grille with regulation VMOSR

Grids are used to extract air from clean rooms, especially from medical areas where materials with fibrous waste are used. However, they can also be used for less demanding environments. They are also used for air exchange between rooms with different pressures or for self-regulating pressure conditions in individual rooms. They are designed to be built mainly into metal or plasterboard partitions in connection with the exhaust air conditioning system. They can also be installed in doors, ceilings and air ducts.

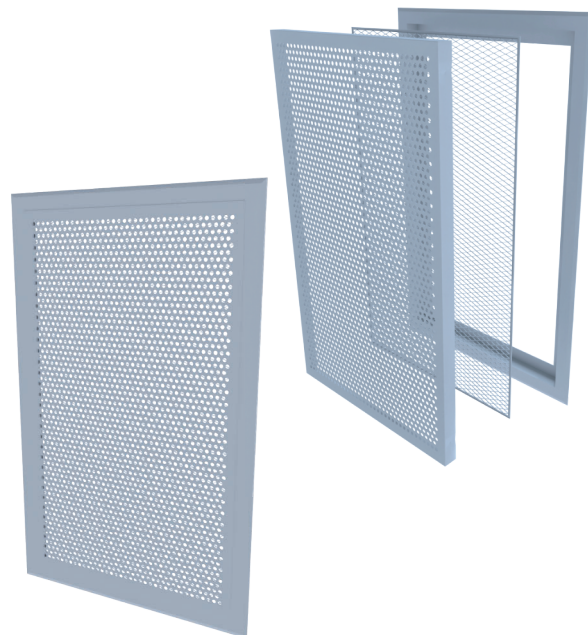
The grilles consist of three parts: a frame without a back wall, a mask with holes with a diameter of 5 mm, and an expanded metal filter that is fitted into the mask. The mask (cover plate) is held in the frame by snap-in springs. In case of the VMOSR grille, a sliding plate with oval holes is additionally screwed to the rear wall of the frame for the possibility of regulation. The VMOSR grille is adjusted after removing the mask and loosening the locking screws of the sliding perforated sheet. The effective free area of the grids in the open position can be seen from the tables on the next page. The advantages of grilles are small depth, easy disassembly and cleaning of all parts and suitability for use in environments with high demands on cleanliness.



The grilles are made of steel metal sheet and powder coated in standard RAL shades, or they are made of stainless steel sheet AISI 304, FIN8.

Wall grille standard VMOS

Dimensions	Weight	Volume flow (m ³ /h) at air velocity w _s (m.s ⁻¹)					Effective free cross-sectional area A _{efekt} (mm ²)
		0,5	1,0	1,5	2,0	3,0	
A x B / mm	kg						
200 x 200	1,2	18	35	53	71	106	9 813
200 x 300	1,5	28	57	85	114	170	15 779
200 x 400	1,9	39	77	116	155	232	21 470
300 x 300	2,1	45	90	134	179	269	24 904
300 x 400	2,7	62	123	185	246	369	34 187
300 x 500	3,3	78	156	235	313	469	43 469
300 x 700	3,9	110	220	330	441	661	61 191
400 x 600	5,0	130	261	391	521	782	72 377
650 x 650	6,9	240	479	719	958	1437	133 097



Wall grille with regulation VMOSR

Dimensions	Weight	Volume flow (m ³ /h) at air velocity w _s (m.s ⁻¹)					Effective free cross-sectional area A _{efekt} (mm ²)
		0,5	1,0	1,5	2,0	3,0	
A x B / mm	kg						
200 x 200	1,4	18	35	53	71	106	9 813
200 x 300	1,6	28	57	85	114	170	15 779
200 x 400	2,1	39	77	116	155	232	21 470
300 x 300	2,3	45	90	134	179	269	24 904
300 x 400	2,9	62	123	185	246	369	34 187
300 x 500	3,5	78	156	235	313	469	43 469
300 x 700	4,3	110	220	330	441	661	61 191
400 x 500	4,2	107	215	322	429	644	59 640
400 x 600	5,2	130	261	391	521	782	72 377
650 x 650	7,1	240	479	719	958	1437	133 097

